



**Lifespan of the Cotton End Plan Policies**

1.20 The Cotton End Plan has a lifespan of 17 years, taking us to 2040, which is in concurrence with Bedford Borough Council’s new Local Plan 2040. We recognise that the Plan will be delivered and implemented by different stakeholders and partners and that it is not a rigid blueprint but provides a framework for change through its stated vision, objectives, policies and projects. The intention is for the Cotton End Plan to be reviewed every five years, aligned with recent legislation, as new challenges and opportunities arise.

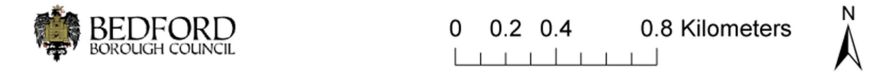
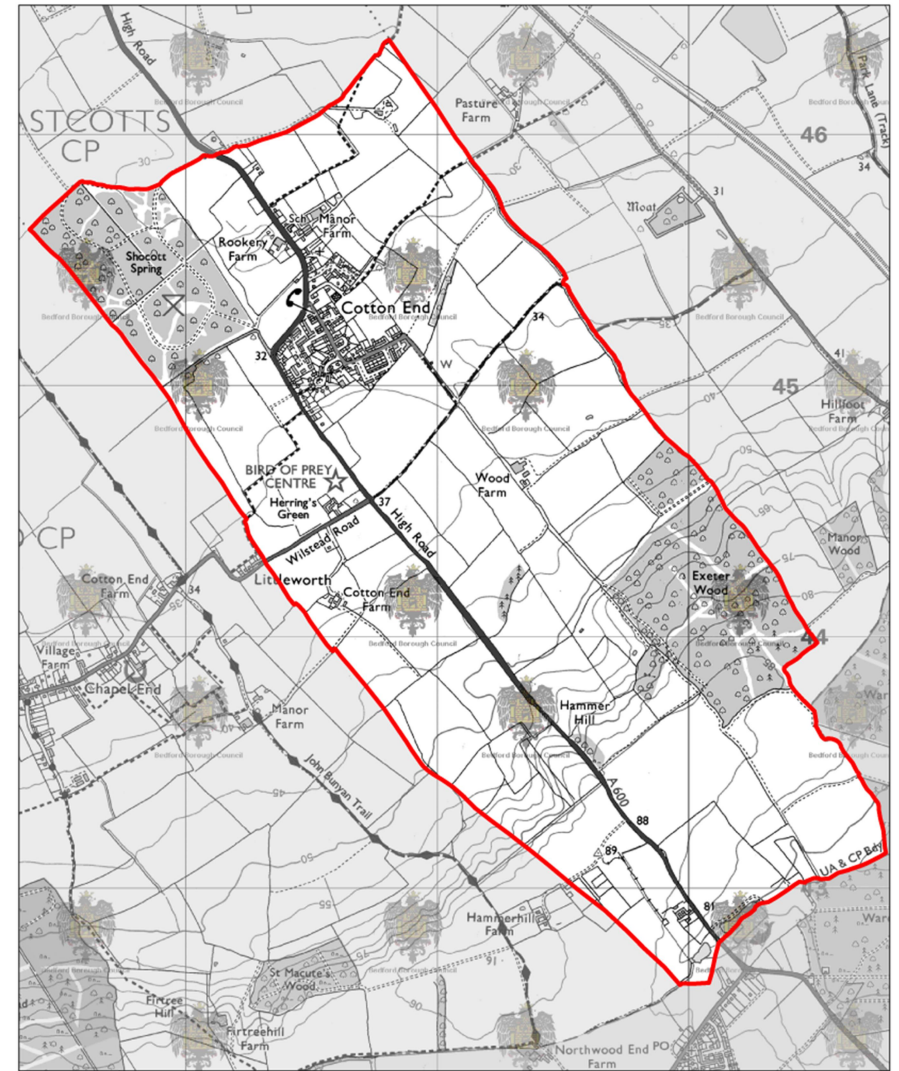
**Geographical scope of the Cotton End Plan**

1.21 It was agreed that the Neighbourhood Area – the area covered by the policies of the Neighbourhood Plan – should include all of Cotton End Civil Parish, which includes the village itself as the residential centre of Cotton End Parish, as well as all the countryside surrounding it. This takes into account that the development pressures relating to outlying villages and hamlets are different to those of Bedford itself and that robust policies need to be in place. **Figure 1** shows the boundary of the Neighbourhood Area.

**The Cotton End Neighbourhood Plan Area**

**Figure 1** highlights in **red** the boundary of the Cotton End Civil Parish and Neighbourhood Development Plan Area. The Plan Area proposed by Cotton End Parish Council and approved by Bedford Borough Council, embraces the village of Cotton End and all the surrounding green space in Cotton End Parish.

**Figure 1:** Cotton End Neighbourhood Plan Area



Crown Copyright and Database Rights 2019 Ordnance Survey 100049028

**Cotton End Neighbourhood Plan:  
Proposed Neighbourhood Area Boundary**  
Key  
[Red outline] Cotton End Neighbourhood Area Boundary